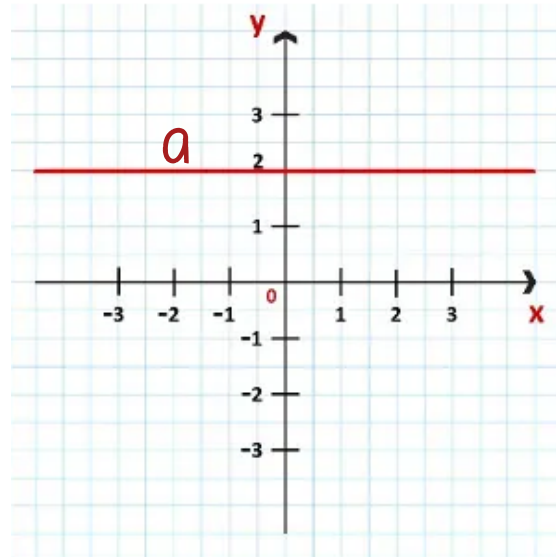




Função Constante

$$f(x) = a$$

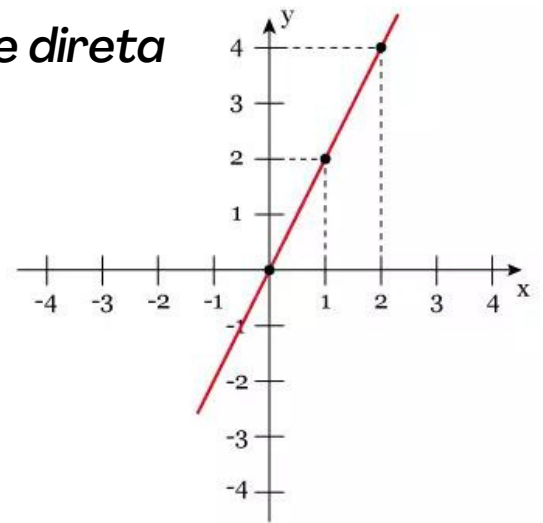


Função Linear (Proporcionalidade direta)

Declive ou constante de proporcionalidade direta

$$f(x) = ax$$

$$a = \frac{y}{x}$$



Função Afim

$$f(x) = ax + b$$

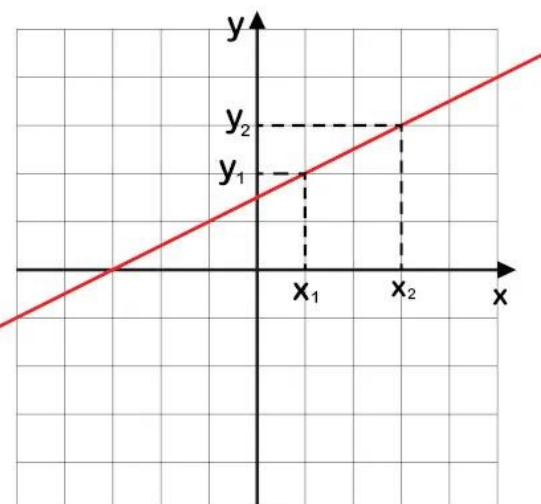
Declive Ordenada na origem

Calcular Declive

$$a = \frac{y_2 - y_1}{x_2 - x_1}$$

legenda:

$$a = \frac{y_2 - y_1}{x_2 - x_1}$$

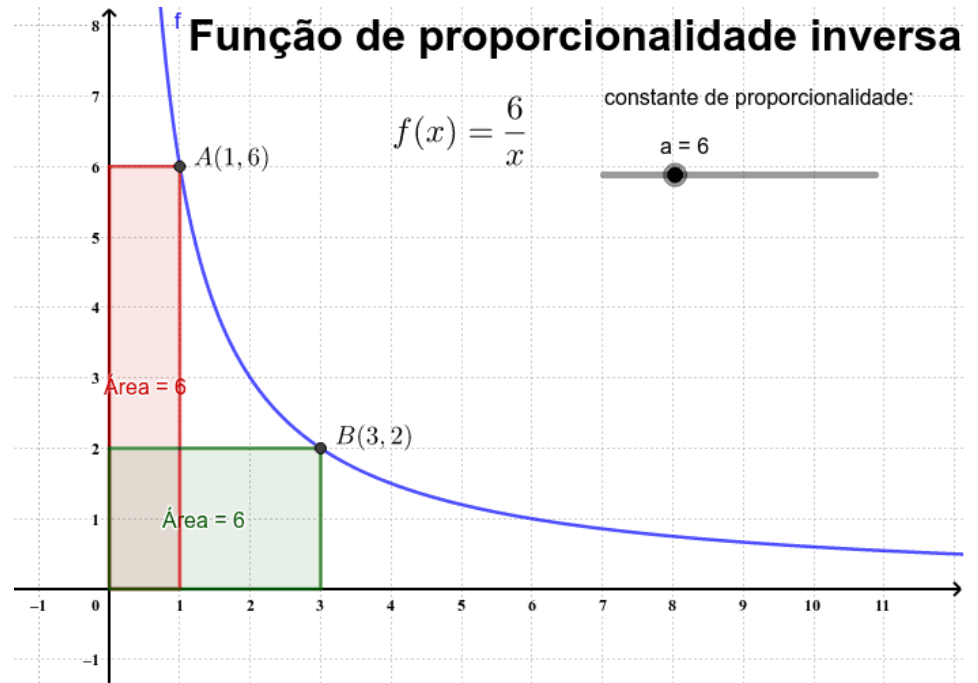




Função Inversa

$$f(x) = \frac{k}{x}$$

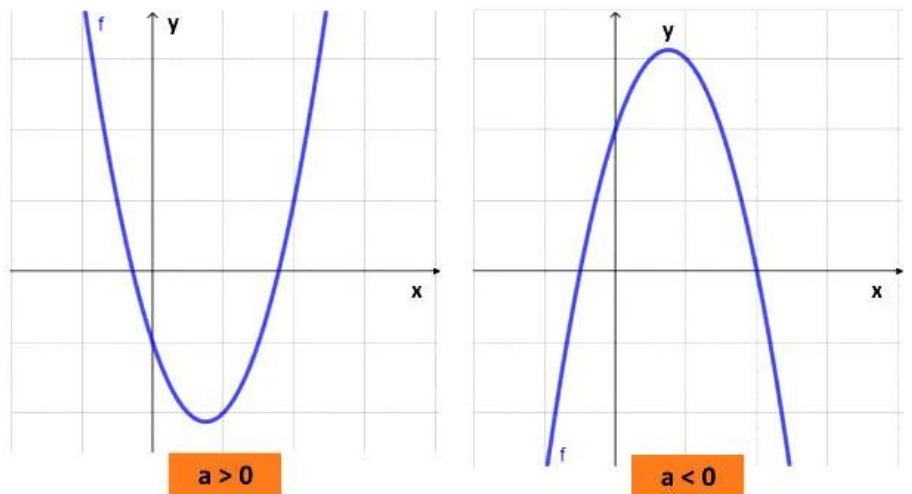
$$k = x \times y$$



Função Quadrática

$$f(x) = ax^2$$

$$a = \frac{y}{x^2}$$



Quanto **maior** o valor de **a** mais fechada está a parábola